

# Pendant Light **Yellow Jacket** Installation Instructions

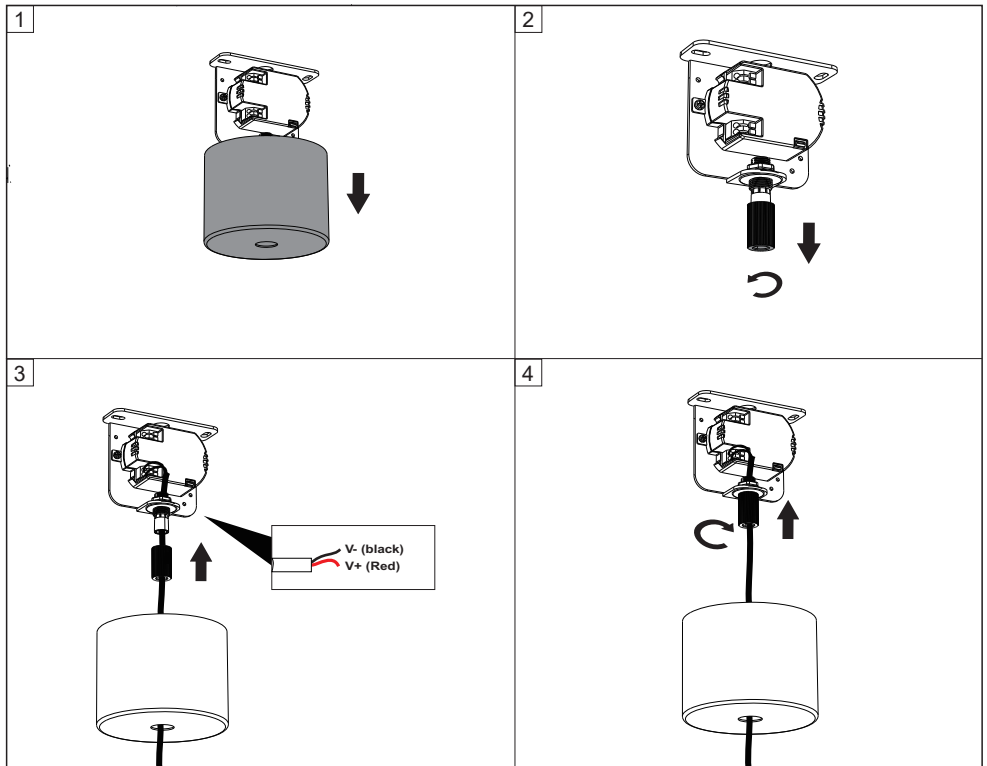
Please read this instruction carefully before commencing installation and retain for future reference. It is recommended that the Luminares is installed by a qualified personnel. These products must not be modified. If any modification is made it may invalidate the warranty and may render the product unsafe. All electrical installations must be carried out according to current IEE Wiring Regulations.

## Important safety Notes

1. Switch off the electricity mains supply before commencing installation or maintenance and (if a fuse box is used) remove the appropriate circuit fuse to avoid accidental switching on of the mains supply.
2. Connect to a 220V-240V supply in accordance with IEE regulations.
3. Make sure all connections are tight with no loose strands.
4. Ensure fire regulations are not breached when install the products.
5. If there are any doubt regarding this instruction, consult a qualified personnel.

## Warning:

1. For indoor use only
2. Please ensure that the packaging is disposed of in a safe environment
3. If cable is defected, do not use or exchange the cable.
4. It is recommended that the Luminares is installed by a qualified personnel.
5. Do not look at the lighted lamp directly.



# Pendant Light Yellow Jacket Installation Instructions

Please read this instruction carefully before commencing installation and retain for future reference. It is recommended that the Luminaires is installed by a qualified personnel, These products must not be modified. If any modification is made it may invalidate the warranty and may render the product unsafe. All electrical installations must be carried out according to current IEE Wiring Regulations.

## Important safety Notes

1. Switch off the electricity mains supply before commencing installation or maintenance and (if a fuse box is used) remove the appropriate circuit fuse to avoid accidental switching on of the mains supply.
2. Connect to a 220V-240V supply in accordance with IEE regulations.
3. Make sure all connections are tight with no loose strands.
4. Ensure fire regulations are not breached when install the products.
5. If there are any doubt regarding this instruction, consult a qualified personnel.

## Warning:

1. For indoor use only
2. Please ensure that the packaging is disposed of in a safe environment
3. If cable is defected, do not use or exchange the cable.
4. It is recommended that the Luminaires is installed by a qualified personnel.
5. Do not look at the lighted lamp directly.

